



**dennis  
family  
homes**

a family building  
homes for families™



# HOUSE & LAND

# \$528,006\*

## RIVERDALE VILLAGE – TARNEIT

Lot 1709 Labero Drive  
Tarneit VIC 3029

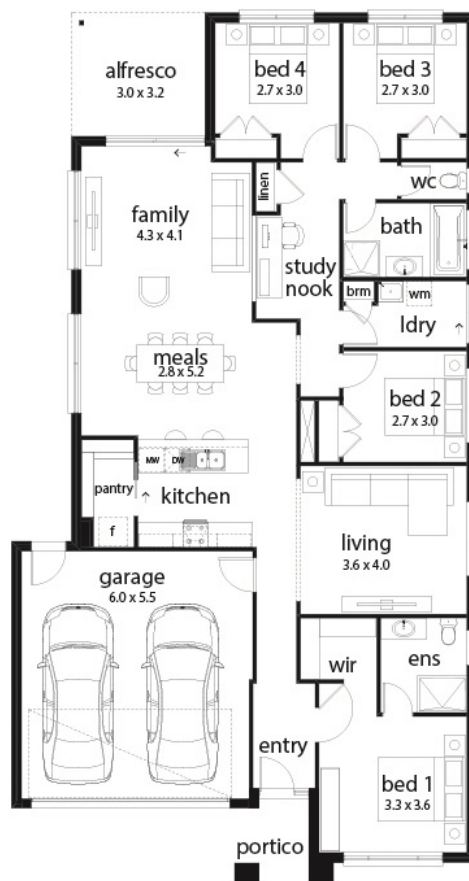
🚗 4 🏠 2 🚗 2 🛋️ 2 📺 1 🏠 1

### Onyx 23 Mila Facade

(Aspirations)

Home size: 22.43sq Land size: 350m<sup>2</sup>

- ✓ Aspirations Inclusions
- ✓ Site Costs Allowance
- ✓ Developer/Estate Covenant Requirements
- ✓ 2580mm ceiling height to ground floor
- ✓ Double Garage
- ✓ Sectional Garage Door
- ✓ Remote control to garage door
- ✓ Stainless Steel Appliances
- ✓ 900mm Technika appliance pack
- ✓ Gas ducted heating
- ✓ Floor Coverings
- ✓ 35 m<sup>2</sup> of Concrete Drive and Paving
- ✓ Current Promotion
- ✓ 20mm Caesarstone benchtops to kitchen
- ✓ Feature Render



Go to [dennisfamily.com.au](http://dennisfamily.com.au) or call  
**1800 DENNIS** for more information.

Prithvi Gandhok 0437 123 566

**\*\*WE WELCOME YOUR ENQUIRIES\*\***

Reference HL0035636

**RIVERDALE VILLAGE +**

\*Subject to land and build contracts for specified lot, available until sold. 1. Images not to scale and may differ from final built forms. 2. Landscaping, driveway, retaining walls, paving, decking, fencing, decorator items and furnishings not included. 3. Unless stated, site costs are not fixed, package price may increase depending on: rock removal and services connection costs, retaining walls, tree root mitigation, developer requirements, BAL zoning and other statutory requirements. 4. "Fixed site costs" packages include rock removal and services connection only, exclude retaining walls and tree root mitigation. 5. Price based on facade shown, excludes stamp duty, legal and transaction costs eg FIRB, finance fees. 6. Customers required to enter into a separate land contract with the land developer. 7. Prospective buyers should make and rely on their own enquiries and seek independent legal and financial advice. 8. Package not available in conjunction with any other promotions. © 2019. Dennis Family Homes Pty Ltd ACN 056254249 is a registered building practitioner CDB-U 49195 (Vic) and 173511C (NSW).